

## **Planetary Pipe Cutter C3.5/C4.5/C6.5 /8.5/13.5 Instruction Manual**



Dear customer, thank you for purchasing our equipment. Before using the equipment, please read the instruction manual carefully. Especially look at the matters needing attention because most of the after-sales problems caused by faulty operation. Thank you for your cooperation and understanding. Please don't hesitate to contact us If you find any

questions. We will actively improve in order to do better.

## Part 1: Safe operation rules

CT3.5-CT4.5 Pipe cutting machine is small, light and easy to carry. So it is suitable for field working. Please operate the machine correctly according to the instructions and avoid accidental injury or the damage to the equipment.

1. Ensure that the machine is in a good operating condition.
2. Please confirm that the safety manual is next to the machine.
3. In order to prevent accidents, please follow the rules and regulations formulated by the company.
4. The machine can only be used for the cutting pipes.
5. The damage caused by the illegal operation shall be borne by the user.
6. The machine can only cut the dimensions of the pipe that is specified in the manual. If the required cutting materials is not in the specification, please consult us.
7. Check the machine every day in order to find out the hidden trouble of the machine in time.
8. Only professional workers can operate the machine.

9. Cut off the power supply before moving or repairing the machine.

### Keep a sense of safety

- Report anything unusual to the person in charge of the machine.
- Wear protective glasses, gloves and ear protection device at work.
- Do not touch the machine when it is working.
- Pay attention to observe the environment around.
- Do not use the machine in a wet environment and ensure moderate lighting.
- Do not use the machine near flammable and explosive products.



### The danger of electric shock

When the motor cable is damaged, the direct contact with the electric part will cause death.

- Ensure that the motor cables are kept away from the blade.
- Ensure that the iron chips from the pipe fall off safely when it is cutting.
- Let the cutting part fall slowly.
- Someone must watch over the running machine.
- Take care of the power cord when you cut pipes.



### The danger of cut damage

- Do not touch the machine when it is cutting cube.
- Please wear protective gloves when cutting.



### Clean up the surplus material

- Recycle the useful materials.
- Dispose the unwanted sundries properly.

### Matters need attention

- Please use the blades delivered from our factory.  
If you need to buy a blade, please contact us. We cannot guarantee the cutting effect if you buy the blades from other places.
- Do not use the air gun to blow iron chips in order to prevent iron chips from blowing into the machine. Please use our hairbrush to remove iron chips.

## Part 2: Specification and parameters description

model number	unit	CT3.5	CT4.5	CT6.5	CT8.5	CT13.5
cutting range	mm	6-90	5-120	16-170	59-220	150-350
	Inch	1/4-3.5	1/4-4.5	3/5-6.5	2.3-8.5	6-13.5
cut wall thickness	The thinnest (mm)	0.5	0.5	0.5	0.5	0.5
	The thickest (mm)	3(or 8)				
power of motor	w	1300				
Motor voltage		220V,50Hz				
Level		<ul style="list-style-type: none"> <li>Each level have three speed adjustment</li> </ul>		<ul style="list-style-type: none"> <li>Each level have three speed adjustment</li> </ul>		
Long & wide & high	mm	600*480*500	680*520*640	680*520*640	714*585*732	817*546*830
net weight	kg	37kg	44kg	50kg	60kg	83kg
scope of application		<ul style="list-style-type: none"> <li>Plastic pipes (PE,PP,PVDE,PVC)</li> <li>copper tubing</li> <li>stainless steel tube</li> <li>Titanium alloy pipe (special blade required)</li> </ul>		<ul style="list-style-type: none"> <li>Plastic pipes (PE,PP,PVDE,PVC)</li> <li>copper tubing</li> <li>stainless steel tube</li> <li>Titanium alloy pipe (special blade required)</li> </ul>		

## Part 3: Packaging and installation instructions



CT3.5/4.5/6.5/  
8.5/13.5 Wooden box packing  
or iron box with  
brake wheel

### Packing list

1. Pedestal and WX10 cutting motor, installed a blade
2. A 5MMT type inner hex angular
3. A pair of protective glasses
4. A spanner
5. A hairbrush

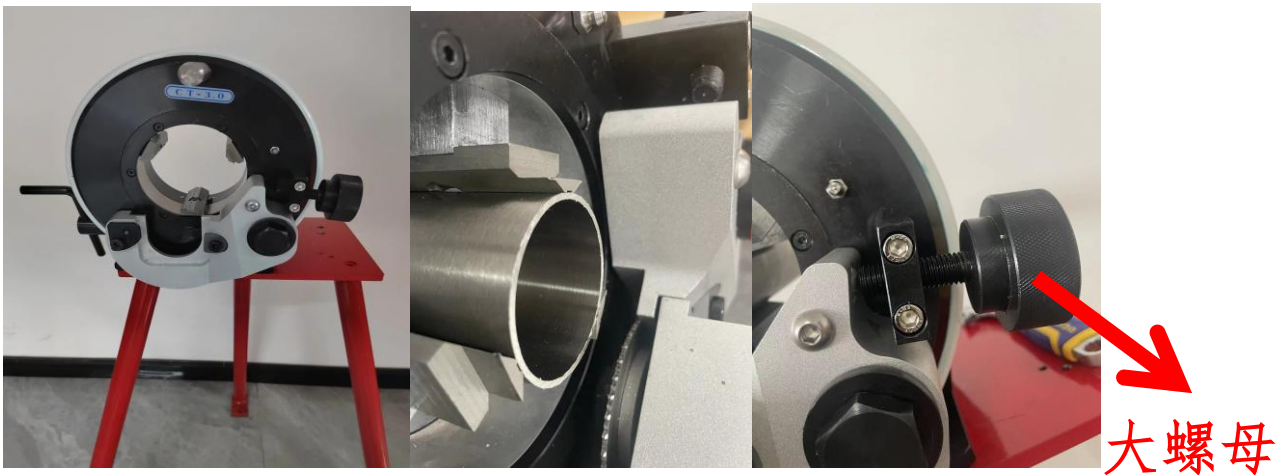
### Install machine steps




619166278852

1. Align both sides, bottom plate and workbench.
2. Put two size 12MM screw holes on the back.
3. CT3.5-CT4.5 is the same.

### CT3. operation manual



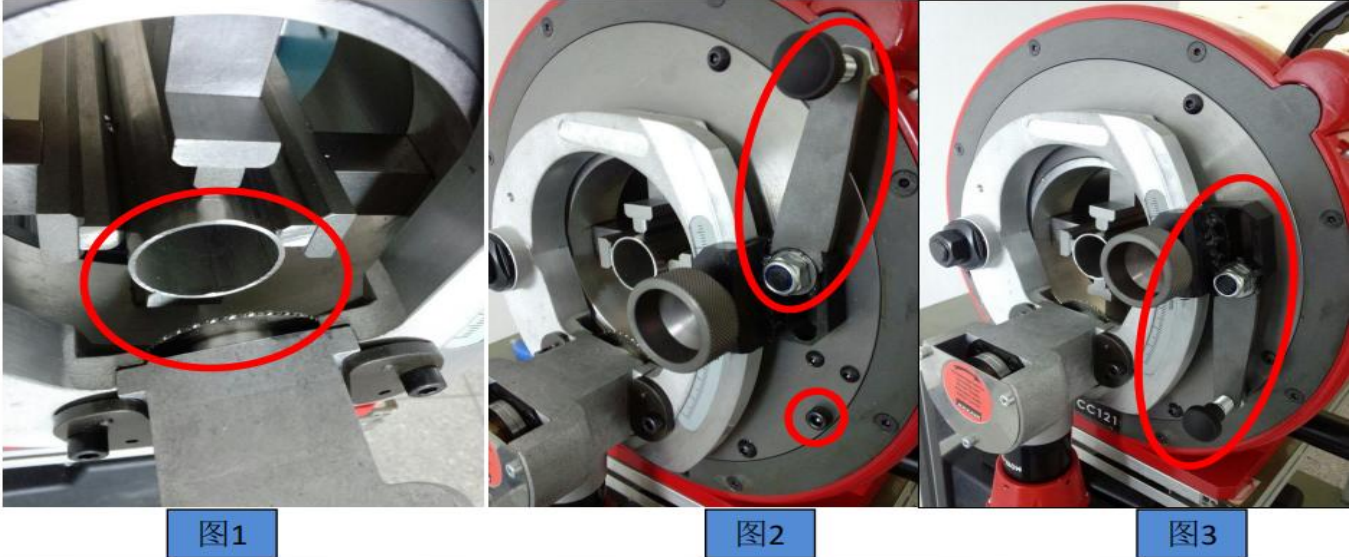
1. Clean the motor groove iron with a hairbrush.
2. Release the slice on both sides.
3. Open the 3 stay bars to the maximum.
4. Turn the motor slot to 7 o'clock and clamp the motor.
5. Clip the pipe to align the claws by not exceeding the blade. By adjusting the large nut to make the blade exceed 3-4 teeth in the inner wall.

	<p>固定 Fixed rod</p> <p>电机把手 Motor handle</p>	<ol style="list-style-type: none"> <li>1. Measure the length of the tube and then clamp it.</li> <li>2. Adjusts the motor to the second level 3rd speed, open the switch and press the side button.</li> <li>3. Hold the fixing bar with the left hand to prevent the knife disc from turning.</li> <li>4. Pull the motor cutting feed up with the right hand.</li> <li>5. The cutting feed is rotated to cut through the inner wall for several times.</li> <li>6. After cutting, put the motor in place and then power off.</li> </ol>
--	--	--

## CT4.5operation manual



- (1) 先把管子插入到接近锯片的位置，不要超过锯片（图1）  
(2) 将进刀手把插入定位点中（如图2，图3）



1. Insert the tube closed to the saw blade but not overreach it.(P1)
2. Insert the feed handle into the positioning point.(P2, P3)
3. Adjust the upper and lower positions of the motor.(P4)
4. Make the cutting saw blade higher than tube, then screw up it.(P5)



(3) 调整电机上下位置 (图4)

(4) 使切割锯片比管子略高出一一点 (露出3-4颗锯片齿牙) 如图5, 然后拧紧。



图4

固定切割  
电机上下  
位置的  
向左 (松  
开), 向  
右 (拧紧)

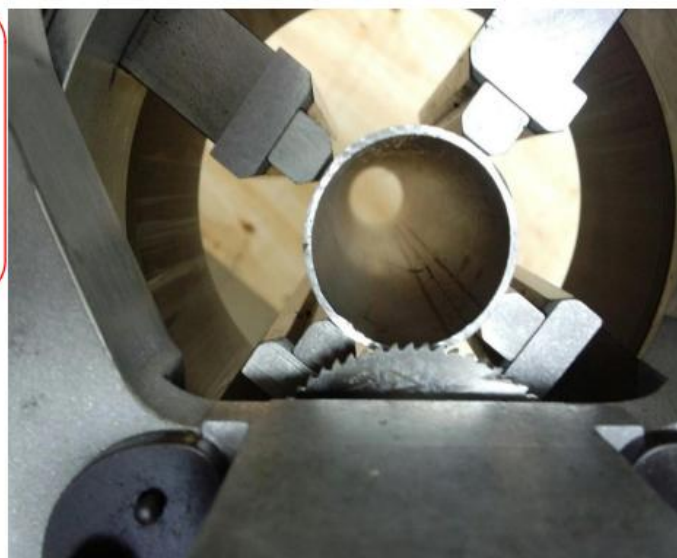


图5

(1) 将进刀手把松开 (图1)

(2) 将管子调整到需要切割的长度后, 旋转夹管旋转手把, 将管子适当夹紧 (如图2)

(3) 将进刀手把慢慢向下移动, 最后固定在卡槽里 (如图3)



图1



图2

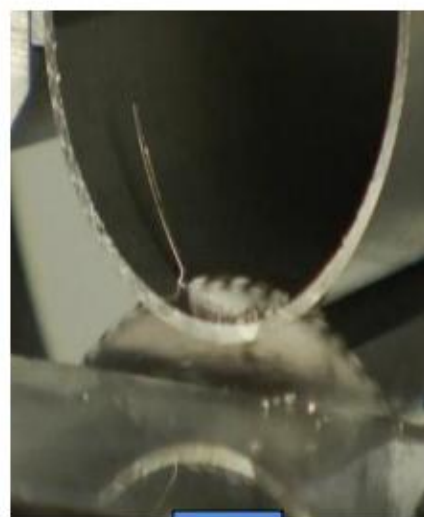


图3

1. Loosen the cutting feed handle.(P1)
2. Measure the length of tube and swivel the handle to clamp the tube.(P2)
3. Move the cutting feed handle slowly down and secure it in the slot.(P3)

- (1) 进刀手把固定在卡槽后，旋转手动旋转轮，切割一周，在5点钟的位停止旋转（如图1）
- (2) 将进刀手把松开（使切割 锯片与管子拉开距离）（如图2）
- (3) 关闭切割电源后，再取出管子。

注：1、同样管径的管子无需在调整进刀，管径大小发生变化时，需重新对刀；  
2、切割时旋转手轮的速度要适当（保持匀速），不可过快，可增加刀片的切割寿命及切割质量；  
3、切割过程中不可硬切，如有重力感时，检查是否有异常，再进行切割；  
4、刀片发黄或切割有重力感，切割有毛刺时，需更换刀片，不可用力硬切。



图1



图2

4. Turn the manual rotary wheel and stop at 5 o'clock after a circle of cutting. (P1)
5. Loosen the cutting feed handle.(P2)
6. Turn off the power and remove the tube.

## Matters needing attention

- 1.The trained workers should be responsible for the operation of the machine and other workers can't use the machine without permission.
- 2.Change the saw blade when the cut pipe surface has a lot of iron chips.
- 3.When the length of tube is more than one meter, please keep the pipe cutter and the tube horizontal.
- 4.Adjust the motor speed according to the saw blade cutting progress. The saw blade will wear down quickly if the speed is very fast.
- 5.The pipe at the clip shall not be shorter than the length of the clip.
- 6.Operators should wear protective glasses and concentrate on the operation of equipment.  
Do not make phone calls and dress tightly.
- 7.You must close all power switches when you cleaning machinery and equipment. Please use the hairbrush to clean the cutting machine to maintain the cleanliness of the equipment. Do not use an air gun to clean up.

**Please ask the supplier for the detailed operation video.Thanks.**